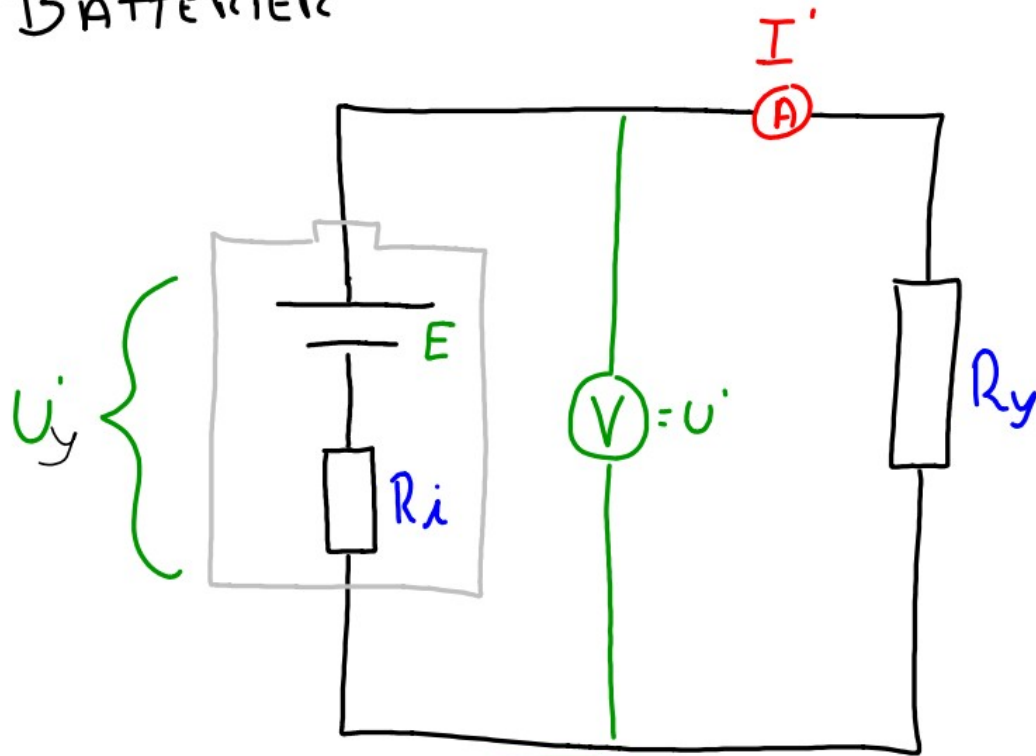


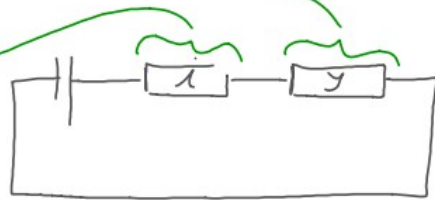
EMK - ELEKTRO MOTORISK KRAFT

BATTERIER



U_y {

	U	I	R
y	U'		
l			
vor	E		



R_i = INDRE MODSTAND

R_y = YDRE MODSTAND

E = ELEMENTET
(DEN ELEKTROMOTORISKE KRAFT)

I_k = KORTSLUTNINGSTRØM

$$I' = \frac{E}{R_i + R_y}$$

$$I_k = \frac{E}{R_i}$$

$$U' = I' \times R_y$$